



Via Crotti, 1
 42018 San Martino in Rio (RE)
 Tel. : +39 0522 695805 - 85
 Fax : +39 0522 646160
 e-mail: aqua@aqua.it
 www.aqua.it

**DOSING SYSTEM
 MIXERS**

MIXERS

Technical Data Sheet

AQUA Spa mixers have been designed to mix liquid product.

Fast mixers (1400 rpm) are suitable to emulsify and maintain the product well mixed. **Slow mixers** (90 RPM) are indicated to mix viscous products or such substances that could emit irritating smokes.

All mixers can be installed on AQUA Spa dosing tanks from 100 to 1000 lt. Easy to mount and reduced maintenance.

There are two shaft versions available: **AISI 316** and **PVC** (with stainless steel core); shaft are protected with special seals that avoid the contact with the product.

Upon request AQUA Spa can supply particular configurations able to satisfy various requirements.

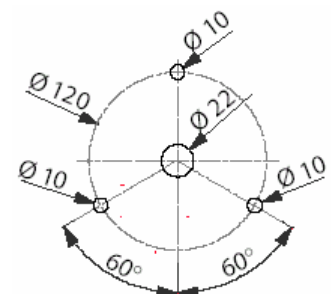
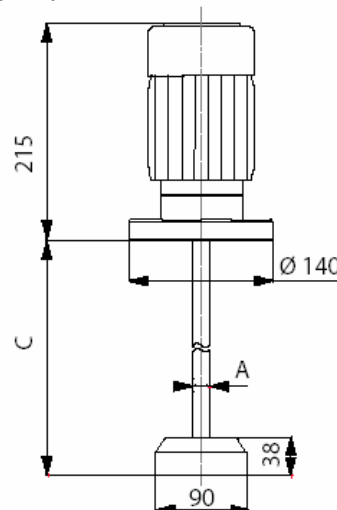
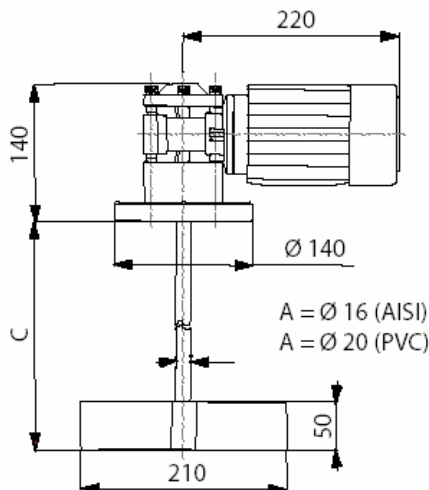


Code reading

Mixer	Motors configuration	Shaft material	Shaft length (cm)	Mixer speed
AG	1 = single phase 230 V / 50 Hz / 0,12 HP	PVC	60	F = fast 1400 rpm
			70	
	3 = three phase 230-380 V / 50 Hz / 0,12 HP	AISI 316	80	S = slow 90 rpm
			90	

	THREE PHASE MOTOR		SINGLE PHASE MOTOR	
	Model	Model	Model	Model
F	AG3-PVC60/F	AG3-AISI60/F	AG1-PVC60/F	AG1-AISI60/F
A	AG3-PVC70/F	AG3-AISI70/F	AG1-PVC70/F	AG1-AISI70/F
S	AG3-PVC80/F	AG3-AISI80/F	AG1-PVC80/F	AG1-AISI80/F
T	AG3-PVC90/F	AG3-AISI90/F	AG1-PVC90/F	AG1-AISI90/F
	Model	Model	Model	Model
S	AG3-PVC60/S	AG3-AISI60/S	AG1-PVC60/S	AG1-AISI60/S
L	AG3-PVC70/S	AG3-AISI70/S	AG1-PVC70/S	AG1-AISI70/S
O	AG3-PVC80/S	AG3-AISI80/S	AG1-PVC80/S	AG1-AISI80/S
W	AG3-PVC90/S	AG3-AISI90/S	AG1-PVC90/S	AG1-AISI90/S

OVERALL DIMENSIONS (mm)



FLANGE