

E-CL52-9-F4G1D14 Chlorine Dosing System

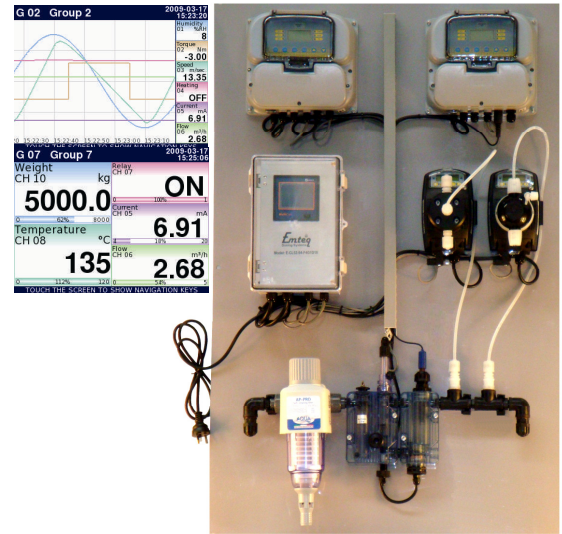
With pH Correction and Data Logging/Recorder



The Emteq Chlorine Dosing Systems are fully engineered measurement and dosing control packages for the chlorination of water in the range of 0 to 10ppm. The system uses the proven amperometric principle for measurement of free chlorine.

The AW-96 controller and the A-CG5 cell with integral flow regulator and sensor combine to provide a safe dosing controller that is easy to operate and maintain.

- ◆ Amperometric cell with integral flow control.
- ◆ pH Measurement for monitoring and control.
- ◆ With paperless chart and data logging of measurement and dose rate.
- ◆ With auto de-gassing pump head on Chlorine pump.
- ◆ With 2nd pump for pH control.
- ◆ With proportional control instead of On/Off.
- ◆ Dosing rates from 0.1 l/hr to 10 l/hr.
- ◆ Pressures: Atmospheric with options for raised pressures.
- ◆ IP-65 Protection.
- ◆ Dosing interlock on loss of sample water flow.
- ◆ Includes pump accessories and mounting kit.
- ◆ Self Cleaning Cell with glass balls.
- ◆ Simple calibration routine.
- ◆ Integral flow regulation.
- ◆ With self cleaning pre-filter.



Specifications:

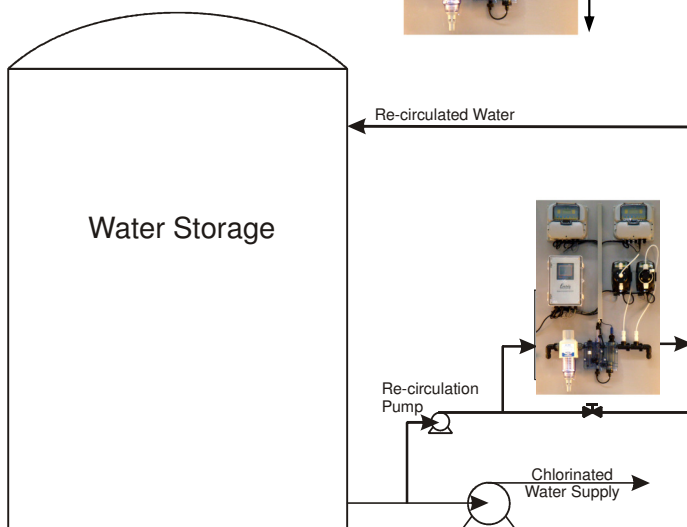
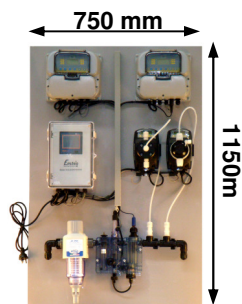
Measurements: Cl ppm, pH
 Ranges: 0-10 ppm, 1-14pH
 Outputs: 2+2x 4-20mA + 6x Relays
 Power Supply: 240 Vac, 50 Hz
 Dose Rate: refer to pump data
 Filter: 80 Micron.
 Water Flow Rate: 40-60 l/hr
 Connections: 1/2" BSP-F & 10x14 Tube
 Control Method: Proportional.
 Temperature: 5-50°C

Dose Rates:

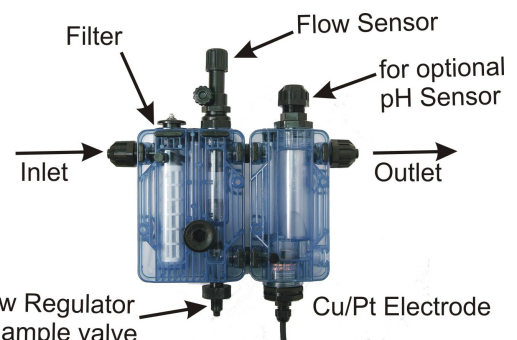
HC997A-1 (l/hr - Bar) 2 - 8, 5 - 5, 7 - 2.
 HC997A-2 (l/hr - Bar) 7 - 4, 8 - 2, 10 - 0.
 HC997A-3 (l/hr - Bar) 3 - 12, 4 - 10, 5 - 8.
 HC997A-4 (l/hr - Bar) 10 - 4, 12 - 2, 14 - 0.

Options:

Feed Forward Control (Flow Paced).
 Electrolytic Cell Sensor.
 Remote access to data.
 SMS Alarms and status data.
 Turbidity, DO and TDS Measurements.



Typical Installation



A-CG5 Amperometric Cell