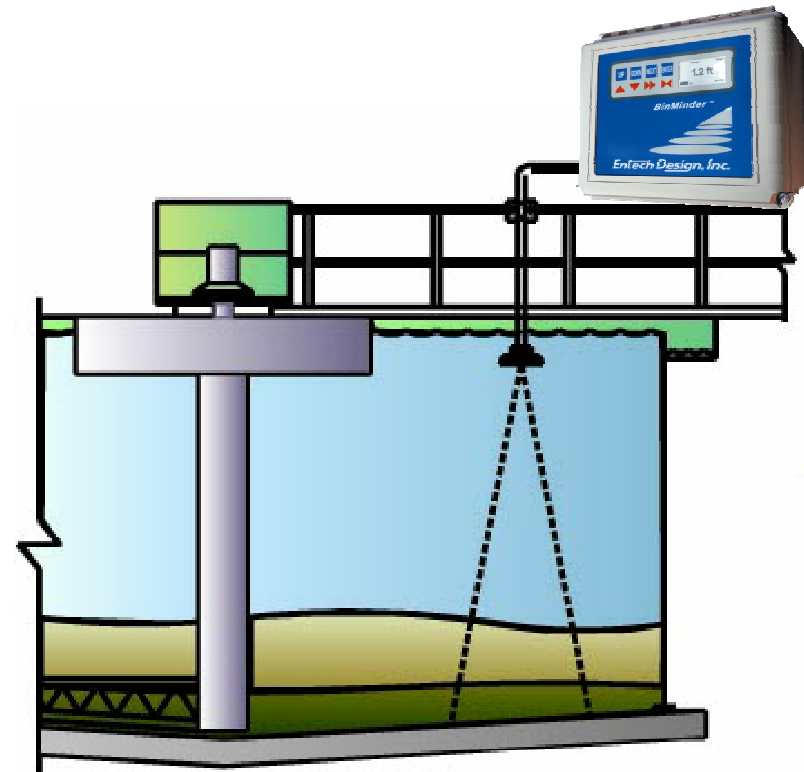


BinMinder 9300 Sludge Blanket Level Measurement



Rugged and Dependable Construction

- ❖ Frequency Designed Specifically for Wastewater Applications
- ❖ Optional Turbidity Sensor
- ❖ 32 bit Digital Signal Processor
- ❖ NEMA 4X Enclosure
- ❖ Virtually Maintenance Free
- ❖ 4x Sensor Input Channels
- ❖ 4+4x 4-20 mA Current Loops
- ❖ Four 10 Amp Contact Relays
- ❖ RS 232 & 485 Serial Communication
- ❖ Multiple Interface Detection Capability



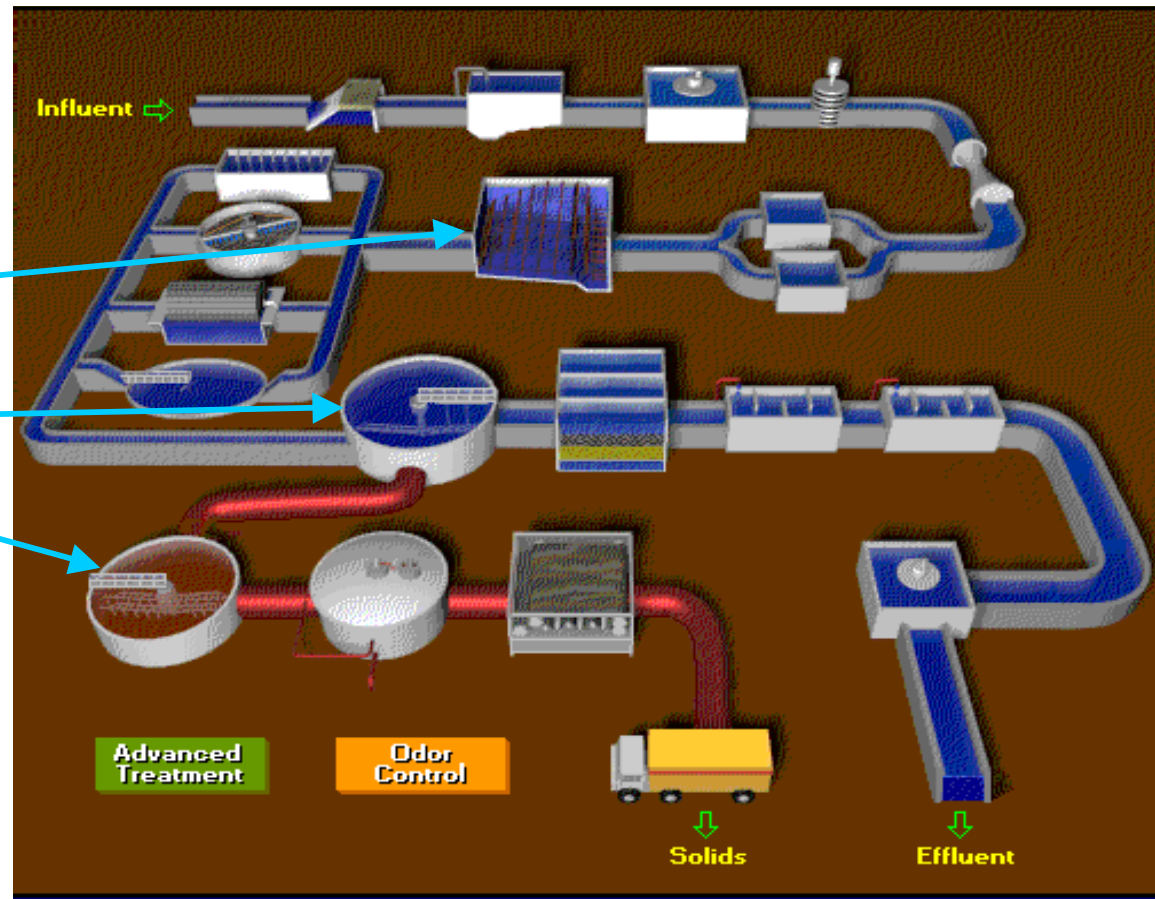
Full Range of Wastewater Applications



Primary Clarifiers

Secondary Clarifiers

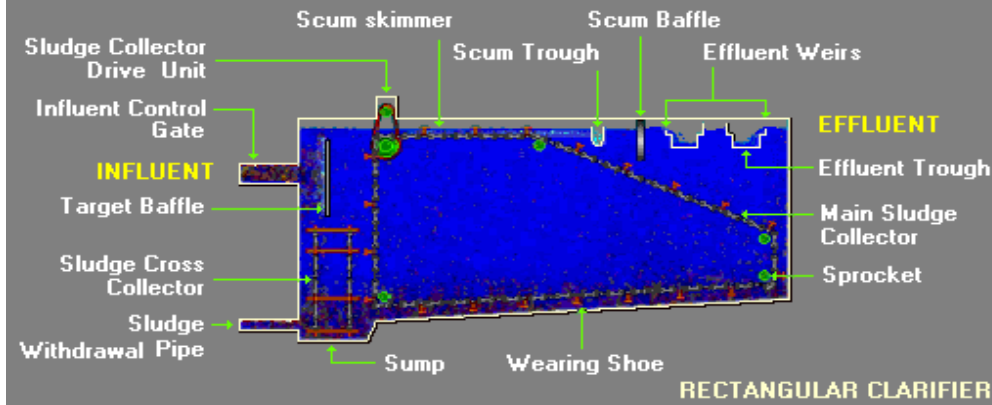
Gravity Thickeners



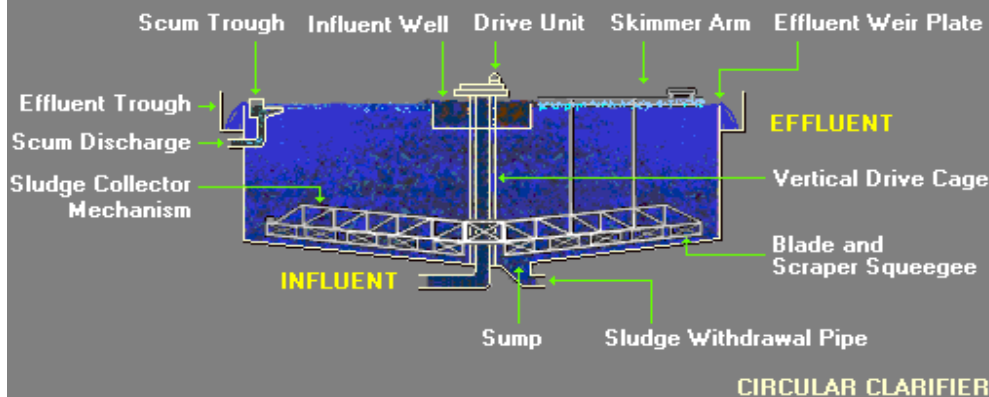
Suits the Full Range of Clarifiers & Thickeners



CLARIFICATION



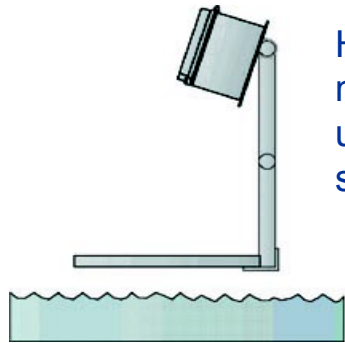
CLARIFICATION



- ❖ Round & Rectangular Clarifiers
- ❖ Open & Covered Tanks
- ❖ Surface Skimmers & Rakes
- ❖ Fixed or Traveling Bridge
- ❖ Flat or Sloped Bottom
- ❖ Shallow & Deep Tanks
- ❖ Tank & Sludge Pit Area Measurements

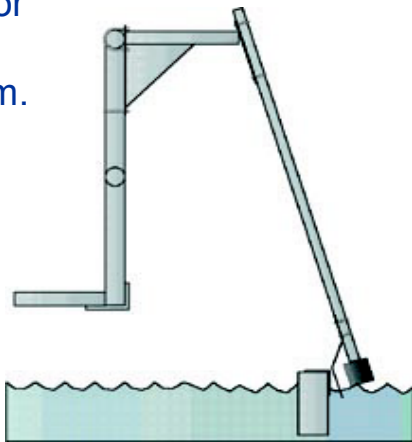


Mounting Hardware For all Typical Installations

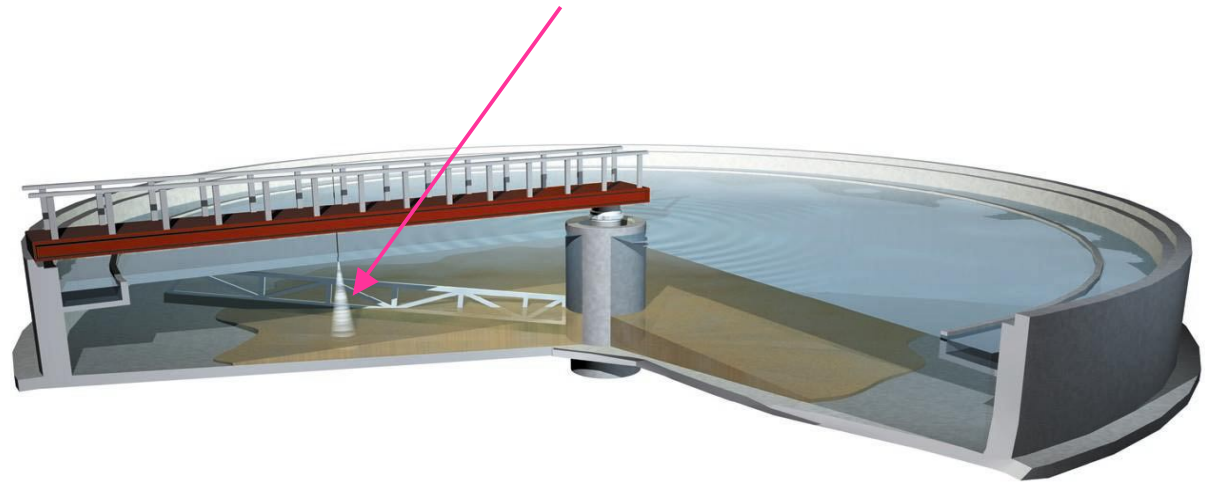


Handrail or wall mount processor up to 1500 ft. from sensor.

Swing bracket clears sensor for passing skimmer arm.



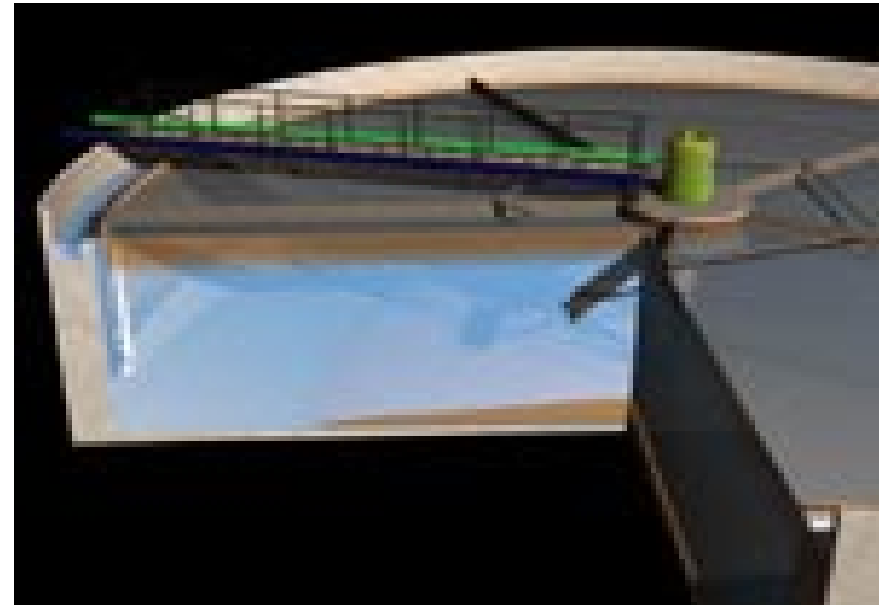
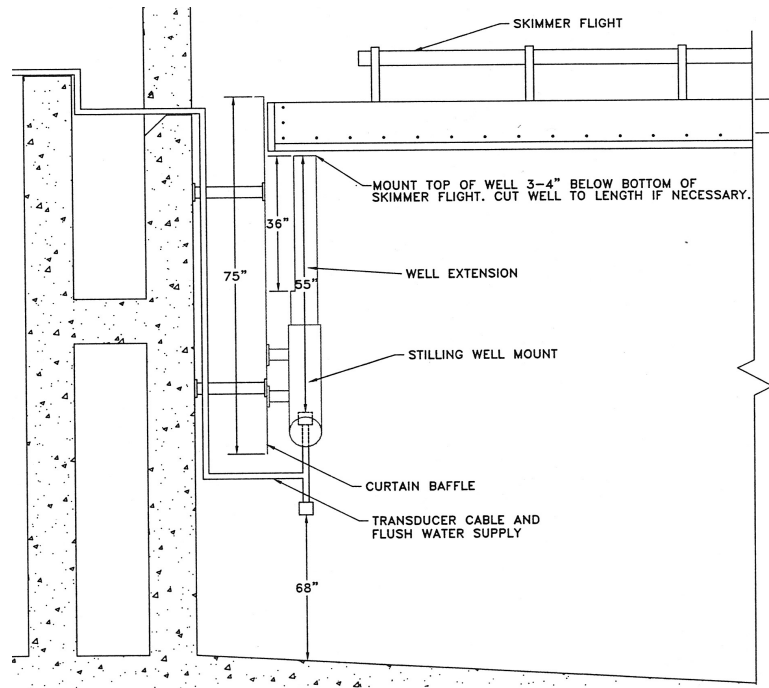
Fixed & Traveling Bridge Installations



Superior Performance in Round, Rectangular, Open and Covered Tanks



Dissolved Air Flotation Thickener Installation



Top & Bottom Sludge Measurements

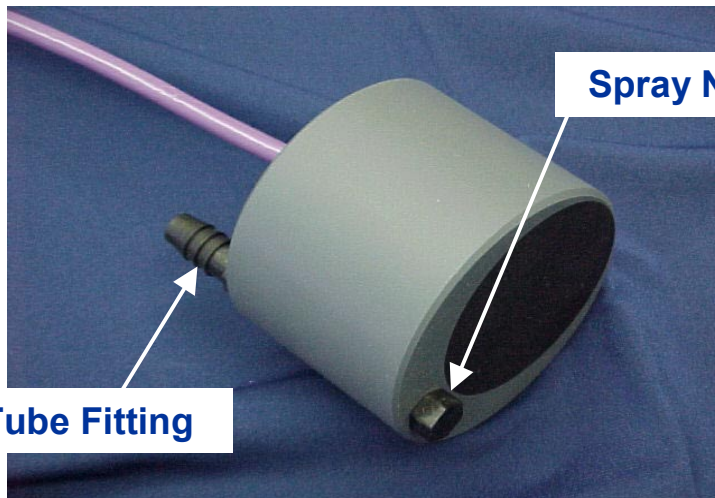


Self-Cleaning Transducer Options

Auto Clean 9306-51



**Automatically Controlled
S/S Wiper Blade**



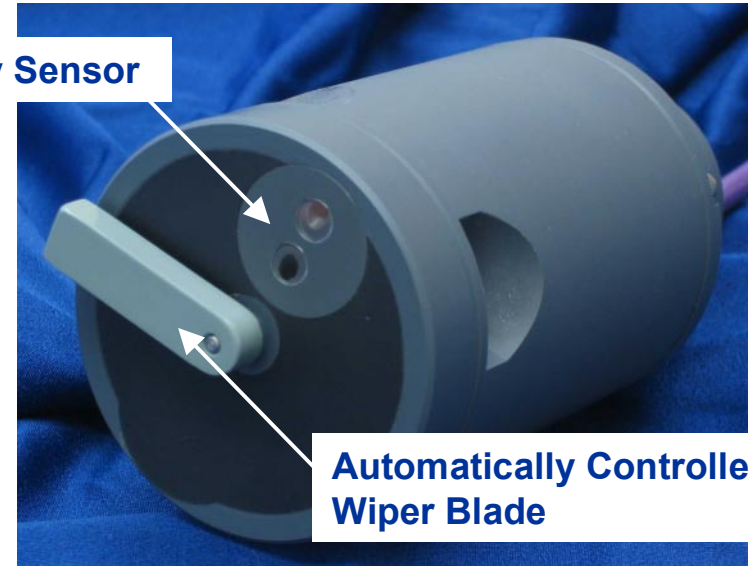
1/8" Tube Fitting

Spray Nozzle

Auto Clean 9306-50



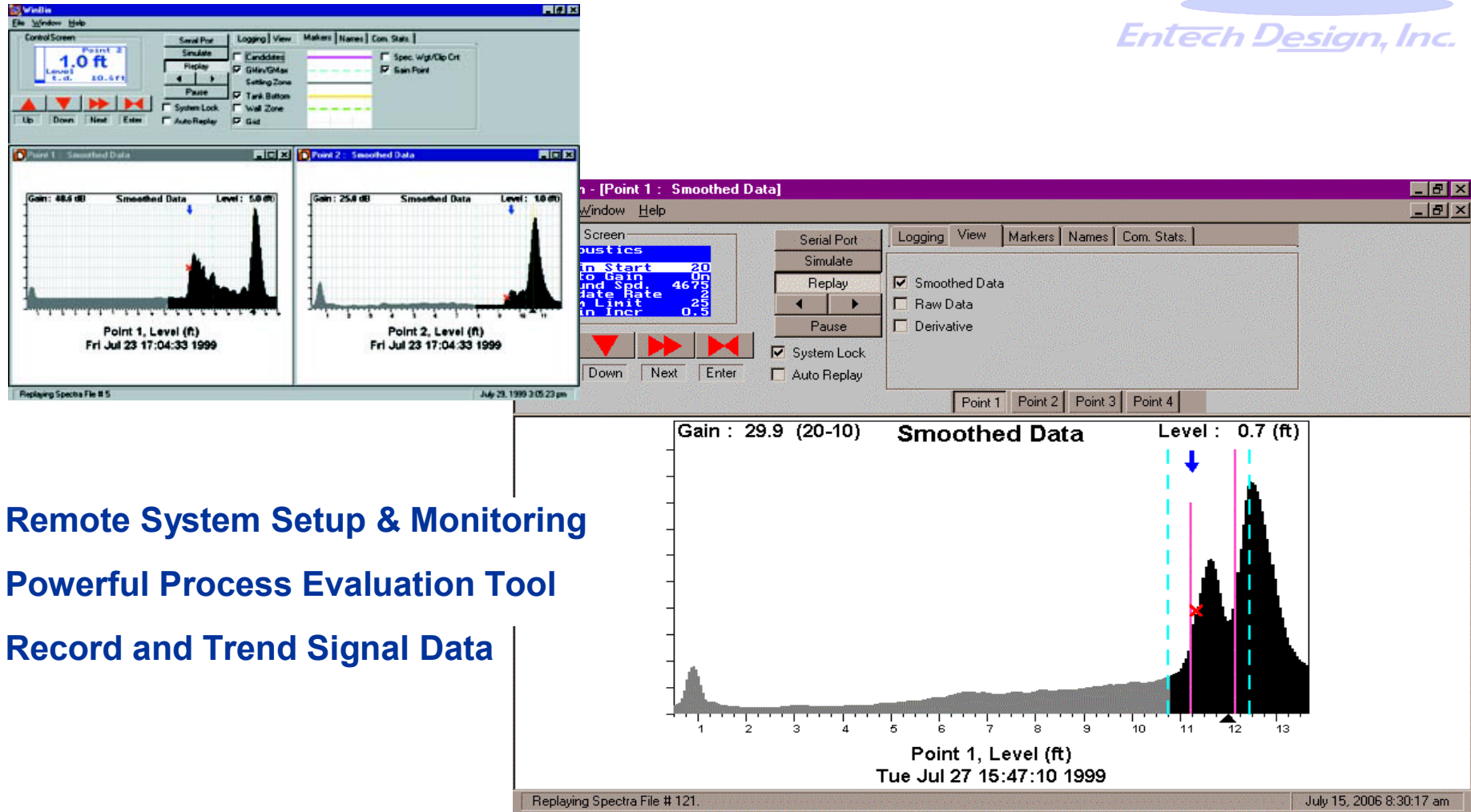
Turbidity Sensor



**Automatically Controlled
Wiper Blade**

**ETS Transducer with Integral
Turbidity Sensor and Auto
Clean Wiper**

Optional WinBin™ System Software



- ❖ Remote System Setup & Monitoring
- ❖ Powerful Process Evaluation Tool
- ❖ Record and Trend Signal Data