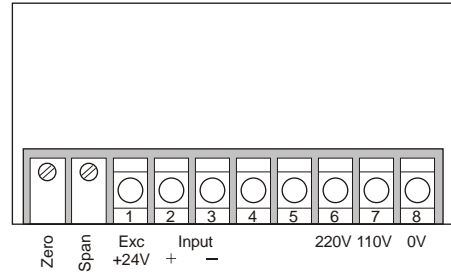


Digital Panel Indicator

4 ~ 20mA Digital Display Meter



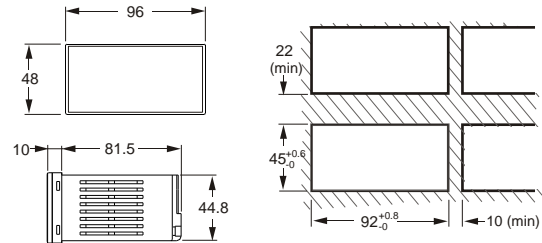
WIRING DIAGRAM:



FEATURES:

- Power Supply 110/220V AC.
- Measures 4 ~ 20mA process signals.
- Utilizes 4 digit 7 segment display, display range is -1999 to 1999.
- Utilizes 5 digit 7 segment display, display range is -19999 to 19999.
- Able to shift position of decimal point for better clarity when measuring of signal.
- Able to adjust scaling so as to magnify the signal to a suitable display range.
- Zero and span calibration.
- Provides excitation 24V DC

DIMENSIONS / PANEL CUTOUT:



SPECIFICATIONS

Size (mm)	96 (W) X48 (H) X91.5 (D) IP65	
Model: PI	4 digit	5 digit
Power Supply	110/220V AC ± 10%, 50/60Hz	
7-segment Display	0.56" red or green 0.8" red or green	0.56" red or green
Input Signal	4~20mA Direct current	
A/D Converter	3-1/2 digits	4-1/2 digits
Accuracy	± 0.1% F.S. ± 1 digit	
Sampling Timing	3 times per second	
Operating Environment	0~50°C (20~90% RH)	
Storage Environment	0°C~70°C (20~90% RH)	
Safety Regulation	2KVAC/1min	
Display Range	-1999 ~ 1999	-19999~19999
Over Range	"0000" flash	
Function	Negative display: " - " Sample value setting: DIP switch Zero calibration: 0 ± 5% F.S Span calibration: 0 ± 10% F.S	

ORDERING INFORMATION:

PI-1130-□□1□

Power Supply	C---110/220V AC 50/60 Hz
Color of Display	R---0.56" Red D---0.8" Red G---0.56" Green E---0.8" Green
Numeric Display	4--- 4 digit 5--- 5 digit

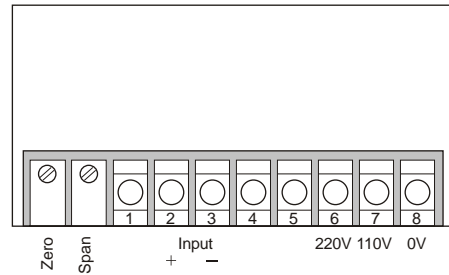
Example: PI-1130-CR14
 Input signal: DC4~20mA,
 Power supply: 110V AC or 220V AC (50/60Hz),
 Red 7-segment display.

★ Please call for customized specifications

DC Current Indication Meter



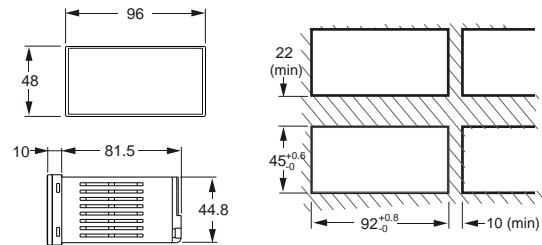
WIRING DIAGRAM:



FEATURES:

- Power Supply 110/220V AC.
- Measures direct current signals.
- Utilizes 4 digit 7 segment display, display range is -1999 to 1999.
- Utilizes 5 digit 7 segment display, display range is -19999 to 19999.
- Able to shift position of decimal point for better clarity when measuring of signal.
- Able to adjust scaling so as to magnify the signal to a suitable display range.
- Zero and span calibration.

DIMENSIONS / PANEL CUTOUT:



SPECIFICATIONS

Size (mm)	96 (W) x48 (H) x91.5 (D) IP65	
Model: PI	4 digit	5 digit
Power Supply	110/220V AC $\pm 10\%$, 50/60Hz	
7-segment Display	0.56" red or green 0.8" red or green	0.56" red or green
Input Signal	Direct current	
A/D Converter	3-1/2 digits	4-1/2 digits
Accuracy	$\pm 0.1\%$ F.S. ± 1 digit	
Sampling Timing	3 times per second	
Operating Environment	0~50°C (20~90% RH)	
Storage Environment	0°C~70°C (20~90% RH)	
Safety Regulation	2KVAC/1min	
Display Range	-1999~1999	-19999~19999
Over Range	"0000" flash	
Function	Negative display: "-" Sample value setting: DIP switch Zero calibration: $0 \pm 5\%$ F.S Span calibration: $0 \pm 10\%$ F.S	

ORDERING INFORMATION:

PI - 2 30 - 1

Input Signal	21--- 0~20uADC	26--- 0~2ADC	▲
	22--- 0~200uADC	27--- 0~5ADC	
	23--- 0~2mA DC	28--- 0~10ADC	
	24--- 0~20mADC		
	25--- 0~200mADC	20--- others	
Power Supply	C--- 110/220V AC 50/60 Hz		▲
Color of Display	R---0.56" Red	D---0.8" Red	▲
	G---0.56" Green	E---0.8" Green	
Numeric Display	4--- 4 digit		▲
	5--- 5 digit		

Example: PI-2430-CR14

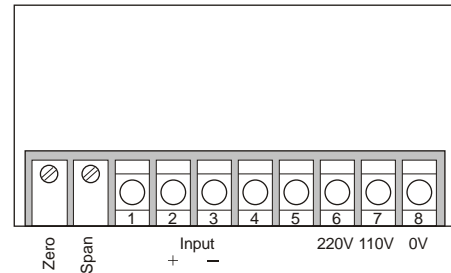
Input signal: 0~20mADC,
Power supply: 110V AC or 220V AC (50/60Hz),
Red 7-segment display.

★ Please call for customized specifications

DC Voltage Indication Meter



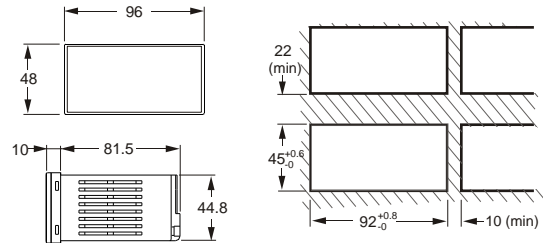
WIRING DIAGRAM:



FEATURES:

- Power Supply 110/220V AC.
- Measures direct voltage signals.
- Utilizes 4 digit 7 segment display, display range is -1999 to 1999.
- Utilizes 5 digit 7 segment display, display range is -19999 to 19999.
- Able to shift position of decimal point for better clarity when measuring of signal.
- Able to adjust scaling so as to magnify the signal to a suitable display range.
- Zero and span calibration.

DIMENSIONS / PANEL CUTOUT:



SPECIFICATIONS

Size (mm)	96 (W) X48 (H) X91.5 (D) IP65	
Model: PI	4 digit	5 digit
Power Supply	110/220V AC $\pm 10\%$, 50/60Hz	
7-segment Display	0.56" red or green 0.8" red or green	0.56" red or green
Input Signal	Direct voltage	
A/D Converter	3-1/2 digits	4-1/2 digits
Accuracy	$\pm 0.1\%$ F.S. ± 1 digit	
Sampling Timing	3 times per second	
Operating Environment	0~50°C (20~90% RH)	
Storage Environment	0°C~70°C (20~90% RH)	
Safety Regulation	2KVAC/1min	
Display range	-1999~1999	-19999~19999
Over Range	"0000" flash	
Function	Negative display: " - " Sample value setting: DIP switch Zero calibration: $0 \pm 5\%$ F.S Span calibration: $0 \pm 10\%$ F.S	

ORDERING INFORMATION:

PI-3 30- 1

Input Signal	31--- 0~200mV DC	36--- 0~5V DC			
	32--- 0~20V DC	37--- 0~10V DC			
	33--- 0~200V DC	38--- 0~600V DC			
	34--- 0~50mV DC	39--- 0~1000V DC			
	35--- 0~2V DC	30--- others			
Power Supply	C---110/220VAC 50/60 Hz				
Color of Display	R---0.56" Red G---0.56" Green	D---0.8" Red E---0.8" Green			
Numeric Display	4--- 4 digit 5--- 5 digit				

Example: PI-3230-CR14

Input signal: 0~20V DC,
Power supply: 110V AC or 220V AC (50/60Hz),
Red 7-segment display.

★ Please call for customized specifications

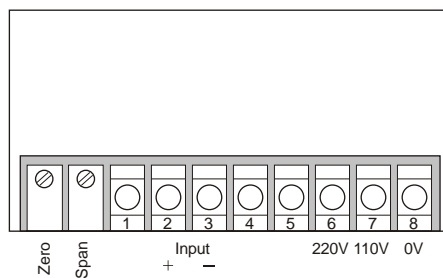
AC Current Indication Meter



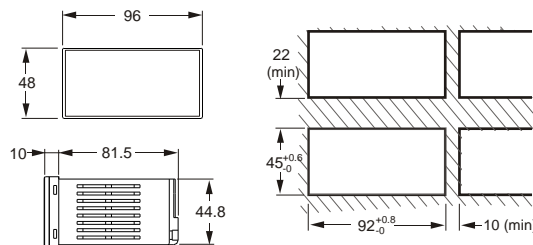
FEATURES:

- Power Supply 110/220V AC.
- Measures alternating signals.
- Utilizes 4 digit 7 segment display, display range is -1999 to 1999.
- Utilizes 5 digit 7 segment display, display range is -19999 to 19999.
- Able to shift position of decimal point for better clarity when measuring of signal.
- Able to adjust scaling so as to magnify the signal to a suitable display range.
- Zero and span calibration.

WIRING DIAGRAM:



DIMENSIONS / PANEL CUTOUT:



SPECIFICATIONS

Size (mm)	96 (W) x48 (H) x91.5 (D) IP65	
Model: PI	4 digit	5 digit
Power Supply	110/220V AC $\pm 10\%$, 50/60Hz	
7-segment Display	0.56" red or green 0.8" red or green	0.56" red or green
Input Signal	Alternating current	
A/D Converter	3-1/2 digits	4-1/2 digits
Accuracy	$\pm 0.1\%$ F.S. ± 1 digit	
Sampling Timing	3 times per second	
Operating Environment	0~50°C (20~90% RH)	
Storage Environment	0°C~70°C (20~90% RH)	
Safety Regulation	2KVAC/1min	
Display range	-1999~1999	-19999~19999
Over Range	"0000" flash	
Function	Negative display: " - " Sample value setting: DIP switch Zero calibration: $0 \pm 5\%$ F.S Span calibration: $0 \pm 10\%$ F.S	

ORDERING INFORMATION:

PI - 4 30 - 1

Input Signal	41--- 0~20uA AC	46--- 0~2A AC	▲
	42--- 0~200uA AC	47--- 0~5A AC	
	43--- 0~2mA AC		
	44--- 0~20mA AC		
	45--- 0~200mA AC	40--- others	
Power Supply	C--- 110/220V AC 50/60 Hz		▲
Color of Display	R---0.56" Red	D---0.8" Red	▲
	G---0.56" Green	E---0.8" Green	
Numeric Display	4--- 4 digit		▲
	5--- 5 digit		

Example: PI-4130-CR14

Input signal: 0~20uAAC,,
Power supply: 110V AC or 220V AC (50/60Hz),
Red 7-segment display.

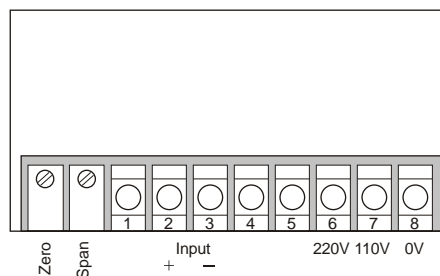
AC Voltage Indication Meter



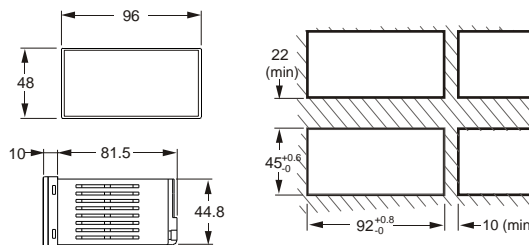
FEATURES:

- Power Supply 110/220V AC.
- Measures alternating voltage signals.
- Utilizes 4 digit 7 segment display, display range is -1999 to 1999.
- Utilizes 5 digit 7 segment display, display range is -19999 to 19999.
- Able to shift position of decimal point for better clarity when measuring of signal.
- Able to adjust scaling so as to magnify the signal to a suitable display range.
- Zero and span calibration.

WIRING DIAGRAM:



DIMENSIONS / PANEL CUTOUT:



SPECIFICATIONS

Size (mm)	96 (W) X48 (H) X91.5 (D) IP65	
Model: PI	4 digit	5 digit
Power Supply	110/220V AC $\pm 10\%$, 50/60Hz	
7-segment Display	0.56" red or green 0.8" red or green	0.56" red or green
Input Signal	Alternating voltage	
A/D Converter	3-1/2 digits	4-1/2 digits
Accuracy	$\pm 0.1\%$ F.S. ± 1 digit	
Sampling Timing	3 times per second	
Operating Environment	0~50°C (20~90% RH)	
Storage Environment	0°C~70°C (20~90% RH)	
Safety Regulation	2KVAC/1min	
Display range	-1999~1999	-19999~19999
Over Range	"0000" flash	
Function	Negative display: "—" Sample value setting: DIP switch Zero calibration: $0 \pm 5\%$ F.S Span calibration: $0 \pm 10\%$ F.S	

★ Please call for customized specifications

ORDERING INFORMATION:

PI-5 3 0 - 1

Input Signal	51--- 0~200mV AC 52--- 0~20V AC 53--- 0~200V AC 54--- 0~50mV AC 55--- 0~2V AC	56--- 0~5V AC 57--- 0~10V AC 58--- 0~600V AC 59--- 0~1000V AC 50--- others			
Power Supply	C---110/220VAC 50/60 Hz				
Color of Display	R---0.56" Red G---0.56" Green	D---0.8" Red E---0.8" Green			
Numeric Display	4--- 4 digit 5--- 5 digit				

Example: PI-5230-CR14

Input signal: 0~20VAC,
Power supply: 110V AC or 220V AC (50/60Hz),
Red 7-segment display.

Microprocessor Instruments

Bargraph/ Digital display Panel Meter

- Switching power supply 85~265 Vac or 18~36 Vdc
- Wide range of user definable scaling ratio.
- SIM (Signal Input Module) available for different application.
- Isolation in Analog / Relay output.
- Support Non-Linear tank volume conversion.
- RS485 ModBus communication.



CE



CE

Microprocessor Based Counter

- Switching power supply 85~265 Vac
- Counting Speed: 20 K cps (Solid-state), 30 cps (Contact)
- Decimal point setting
- Timer display (user set h/min. min/s or s/0.1s)
- Adjustable output delay timing
- Speed units: Second, Minute, Hour
- Includes multi-parameters for Counter, Timer, Batch-counter, Chronometer, Tachometer
- Data retention & RS485 ModBus communication

Digital Panel Indicator

- 0.56" Large 7-Segment LED Display
- Low Cost and Accurate Panel Indicator
- Support all process signals, AC Voltage, DC Voltage, AC Current and DC Current Measurement.
- IP-65 Class Front Panel



CE

PID+Fuzzy Temperature Controller

- ON/OFF, PID+Fuzzy Control
- Auto-tuning, High Accuracy
- Sensor Break Alarm
- Switching Power Supply 85~265 Vac or 18~36 Vdc
- Lock Protection for Variety Parameters Heating / Cooling Bi-directional Control Multi-Input Signals Function Heater Break Detection RS485 ModBus communication



CE



CE

Microprocessor Based Power Quality Meter

- 0.2 grade electrical calibration as well as CE approval
- Monitoring RMS Voltage, Current, Frequency, Power Factor
- Monitoring Active Power (Watts), Reactive Power (Vars), Apparent Power (VA)
- Monitoring Active Energy (Mwh), Reactive Energy (MVarh), Apparent Energy (MVAh)
- Power Quality Harmonics: THD Voltage, THD Current Harmonic distortion
- Password protection on parameters setting
- Provides RS485 ModBus communication interface

FineTek Co., Ltd.

No.16, Tzuchiang St., Tucheng Industrial Park Taipei Hsien, Taiwan.
TEL: +886-2-2269-6789 FAX: +886-2-2268-6682
Email: info@fine-tek.com

Fine automation (ShangHai) Co., Ltd.

No.451 DuHui Rd, MinHang District, Shanghai, China 201109
TEL: +86-21-6490-7260 FAX: +86-21-6490-7276
Email: info.sh@fine-tek.com

FineTek Pte Ltd.

No. 11 Kaki Bukit Road 1, #04-01 Eunos Technolink 415939, Singapore
TEL: +65-6452-6340 FAX: +65-6734-1878
Email: info.sg@fine-tek.com

FineTeK GmbH

Frankfurter Str. 62, OG D-65428 Ruesselsehim, Germany
TEL: +49-(0)6142-17608-0 FAX: +49-(0)6142-17608-20
E-Mail: info@fine-tek.de



Your Made-To-Order Solutions

Distributor: