

Strainer

SF, SFD, SFM

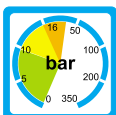
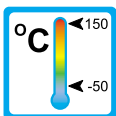
Operation

Inside the strainer a screen basket is fitted to retain solids. Additionally the type SFM is equipped with magnets to withhold ferromagnetic particles.



Application

Retaining of particles contained in liquids or gases.



Features

Characteristics of this sturdy type are:

- high temperature resistance
- high pressure resistance
- Magnet separator (SFM only)
- Easy maintenance
- Threaded connection
Special threads on request

Installation hints

The installation of the strainer can be done in any way in the system. The flow direction must be observed.

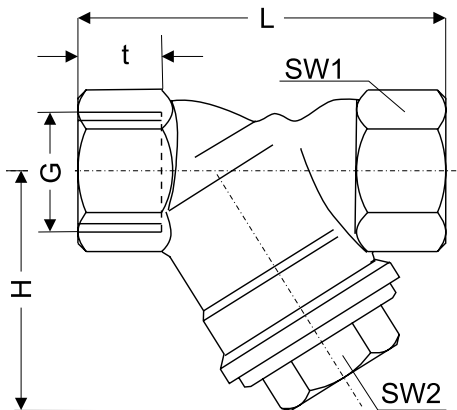
The strainer must not be used as a supporting part in a pipe-construction.

SF SFD SFM 1 0001 07-04 E M



Technical Data

SF, SFD, SFM



G	Type	Material			Type	Material			Type	Material		
		RG	MS	VA		RG	MS	VA		RG	MS	VA
1/4"	SF-8	x			SFD-8	x						
3/8"	SF-10	x			SFD-10	x						
1/2"	SF-15	x		x	SFD-15	x		x	SFM-15	x		x
3/4"	SF-20	x		x	SFD-20	x		x	SFM-20	x		x
1"	SF-25	x		x	SFD-25	x		x	SFM-25	x		x
1 1/4"	SF-32	x		x	SFD-32	x		x	SFM-32	x		
1 1/2"	SF-40	x		x	SFD-40	x		x	SFM-40	x		
2"	SF-50	x		x	SFD-50	x		x	SFM-50	x		
2 1/2"	SF-65		x		SFD-65		x					
3"	SF-80		x		SFD-80		x					
				Strainerbasket: 0,6 mm mash size stainless steel			Strainerbasket: 0,25 mm mash size stainless steel			Strainerbasket: 0,6 mm mash size stainless steel Magnets: hardferrite		
				RG: red brass			MS: brass			VA: stainless steel		

Type	Overall dimensions [mm]						PN		
	G	L	t	H	SW1	SW2	RG	MS	VA
SF-8	1/4"	56	11	35	21	17	16	-	-
SF-10	3/8"	56	11	35	21	17	16	-	-
SF-15	1/2"	66	13	42	27	22	16	-	40
SF-20	3/4"	77	14	50	31	27	16	-	40
SF-25	1"	90	15	62	38	32	16	-	40
SF-32	1 1/4"	112	18	78	47	41	16	-	40
SF-40	1 1/2"	120	18	82	54	46	16	-	40
SF-50	2"	150	22	95	66	56	16	-	40
SF-65	2 1/2"	220	23	125	85	70	-	-	-
SF-80	3	243	26	140	100	75	-	-	-

Type	Overall dimensions [mm]						PN		
	G	L	t	H	SW1	SW2	RG	MS	VA
SFD-8	1/4"	56	11	35	21	17	16	-	-
SFD-10	3/8"	56	11	35	21	17	16	-	-
SFD-15	1/2"	59	12	40	29	19	16	-	40
SFD-20	3/4"	77	14	50	31	27	16	-	40
SFD-25	1"	90	15	62	38	32	16	-	40
SFD-32	1 1/4"	112	18	78	47	41	16	-	40
SFD-40	1 1/2"	120	18	82	54	46	16	-	40
SFD-50	2"	150	22	95	66	56	16	-	40
SFD-65	2 1/2"	220	23	125	85	70	-	16	-
SFD-80	3	243	26	140	100	75	-	16	-

Type	Overall dimensions [mm]						PN		
	G	L	t	H	SW1	SW2	RG	MS	VA
SFM-15	1/2"	66	13	42	27	22	16	-	16
SFM-20	3/4"	77	14	50	31	27	16	-	16
SFM-25	1"	90	15	62	38	32	16	-	16
SFM-32	1 1/4"	112	18	78	47	41	16	-	-
SFM-40	1 1/2"	120	18	82	54	46	16	-	-
SFM-50	2"	150	22	95	66	56	16	-	-

SF SFD SFM 2 0001 07-04 E M

