



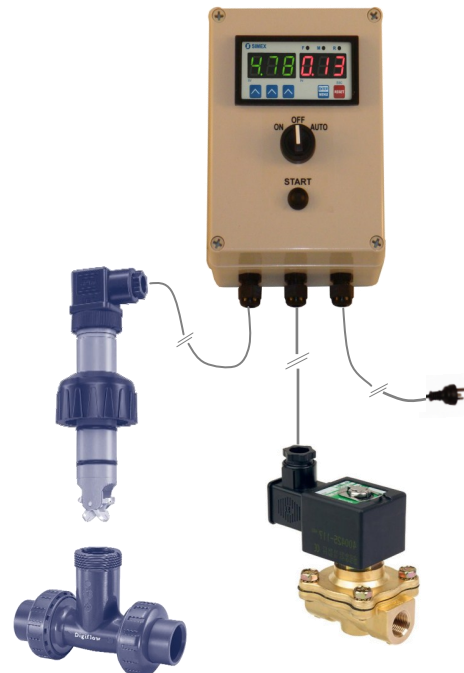
**E-BC03-F950 Batch Controller**  
with 2 controlled Outputs.



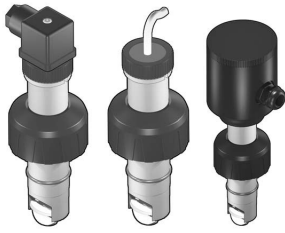
**E-BC03-F951 Batch Controller**  
with 10 batch settings.



**E-BC03-SLIK Batch Controller**  
with 6 digit display.



**E-BC03-SLN Batch Controller**  
with separate set point display.



### FLOWX3 F3.00 Paddlewheel Flow Sensor

- CPVC, PVDF, Brass or SS sensor body.
- Easy insertion system.
- Different versions for remote & compact installations.
- Measurement range over 50:1.
- High chemical resistance.
- Battery powered version.
- 4-20mA output.
- MIN alarm relay output.
- Push-Pull output for universal electrical connection.



### FLOWX3 F3.10 Paddlewheel MINIFLOW Sensor

- IP 68 enclosure.
- ABS body with EPDM or FPM seal.
- ABS 4-blade paddlewheel (no bearings).
- Mono-directional design.
- Installation on standard FIP tees.
- PVDF body version on request.



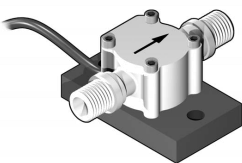
### FLOWX3 F3.80 Oval Gear Flow Sensor

- Compact dimensions.
- Easy installation.
- High chemical resistance.
- High viscosity fluids measurement.
- Low pressure loss.



### FLOWX3 F111 Hot Tap Flow Sensor

- Adjustable sensor position.
- Stainless steel or brass construction.
- Paddlewheel or Turbine technology
- Hot-Tap installation.
- Pressure intake.
- Standard 1 1/4" BSP process connection.
- Battery powered version.
- Compatible with most Data Loggers.



### FLOWX3 ULF Ultra Low Flow Sensor

- POM or ECTFE (Halar<sup>®</sup>) wetted parts.
- Two flow ranges available:
 

-1.5-100 l/h (0.0066-0.44 gpm)
-6-250 l/h (0.264-1.1 gpm)
- High chemical resistance.
- Easy mounting.
- 4-20 mA output.
- MIN alarm relay output.



### Meister DHGF-2/DHGF-4

- Universal mounting.
- High accuracy.
- High chemical resistance (ECTFE-Version).
- Threaded connection.



### Tecfluid COVOL Volumetric Counters

- Construction in EN 1.4404(SS 316L), PVC, PP, PTFE.
- DN 10 to DN 100.
- Viscosity up to 120.000 cP.
- Mounting by means of steel PN 16 EN 1092-1 standard flanges, ANSI flanges, NPT threads & sanitary connections on demand.
- High pressure versions available on demand.



### Tecfluid TM44

- 300 l/hr... 650 m<sup>3</sup>/h H<sub>2</sub>O.
- Accuracy: +/- 0.5% reading value.
- Materials: EN 1,4404 (SS 316L).
- Pick-up coil output signal.
- Associated electronics:

Series CIP / CP  
Series MC01 / MT02  
Series APTM / DFD2

- HART™ protocol on request.



### Water Meter

With pulse output for connection to dosing pumps

- 4 impulses/litre
- sizes 1/2", 3/4", 1", 1 1/4", 1 1/2" & 2"



### Bell Instruments FMTD Micro Flowmeter

- Flow Range: FMTD4: 1 to 250 cc/min. (0.02 cc/cycle).  
FMTD20: 5 to 1250 cc/min. (0.10 cc/cycle).
- Accuracy: +/- 1%.
- Maximum Operating Pressure: Standard: 200 bar (3,000 psig).  
High Pressure: up to 1450 bar.
- Maximum Differential Pressure: 0250: 34 kPa.  
1250: 103 kPa.
- Temperature Range: -40° to 80° C.
- Maximum Viscosity: 25 cP.



### Simex SLIK-N118

- Multi-purpose counter with batching function.
- Wall mounted IP 65 case.
- 2 pulse counting inputs.
- 1 programmable function input.
- 1 counter reset input.
- 0 or 2 relay input.



### Simex SLIK-94

- Multi-purpose counter with batching function.
- 2 pulse counting inputs.
- 1 programmable function input.
- 1 counter reset input.
- 0, 2 or 4 relay (or OC) outputs.



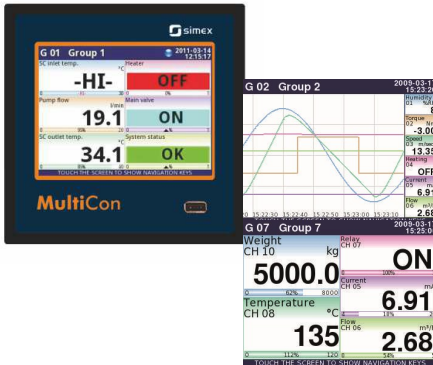
### Simex SLN-94

- Up-down & down-up pulse counter.
- Settable activation threshold.
- 1 pulse counting input.
- 3 control inputs.
- 2 relay (or OC) outputs.



### Simex SLC-94

- Timer.
- START/STOP pulse inputs.
- Counter reset input.
- 2 relay / OC outputs.
- RS-485 / Modbus RTU.



## Simex CMC-99

- 3.5" / 5.7" LCD colour touchscreen.
- Up to 72 analog / digital inputs.
- MultiModbus—up to 3 x RS-485 interfaces.
- Profiles / timers / math functions.
- Visualisation as digits, needles, bargraphs, graphs.
- PID process control.
- Logging functions - max. 10 Hz.
- Easy way to implement control process algorithms.
- Free DAQ Manager Software.
- Free Java Applets on-line visualisation.

## FLOWX3 F9.50 / F9.51 Batch Controller



- Easy Batch Volume setting.
- Simple & Advanced operating modes.
- External Start, Stop & Resume.
- Self explaining calibration menus.
- Auto-calibration.
- 2 Stage Shutdown Control (F9.50.L)
- Overrun alarm.
- Missing Signal Alarm.
- End-of-Batch Pulse Output.
- Output simulation for system testing.
- Count-up or Count-down batch indication (F9.50.L).
- Permanent & Resettable totalizer.
- 3 line alphanumeric backlight LCD.
- IP65 monolithic packaging.
- 5 button keypad.
- 1 packaging for compact/pipe, panel, Or wall installation.
- Automatic or Manual Overrun Compensation (F9.50.L).
- Advanced Valve Control (F9.50.L)
- Store up to 10 different batch parameters (F9.51L).
- Count-up batch indication (F9.51.L).

## Dosing Pumps (Dosing System)



### HC897 - ON/OFF Control

- Adjustable stroke rate
- 0-20% 0-100%
- PVDF head
- Input for interlock
- 4 Sizes (l/hr-Bar) : 1.) 2 - 8, 5 - 5, 7 - 2  
2.) 7 - 4, 8 - 2, 10 - 0  
3.) 3 - 12, 4 - 10, 5 - 8  
4.) 10 - 4, 12 - 2, 14 - 0



### HC997 - Proportional Dosing

- PVDF head, viton seals
- Pulse input
- 4-20 mA timer
- 7 Day timer
- 4 Sizes (l/hr-Bar): 1A/1B.) 2 - 8, 5 - 5, 7 - 2  
2A/2B.) 7 - 4, 8 - 2, 10 - 0  
3A/3B.) 3 - 12, 4 - 10, 5 - 8  
4A/4B.) 10 - 4, 12 - 2, 14 - 0



### HC201 - Proportional Dosing

- PP head, viton seals
- Pulse input & 4-20 mA input
- 7 day timer
- Settable in ppm
- Stroke length & frequency adjustment
- Input for interlock
- Size (l/hr - bar)



### HC200PH/RX - Proportional Dosing

- pH & ORP sensor input
- Stroke length & frequency adjustment
- Input for interlock

## Solenoid Valves

### FIP S1 / S2 Plastic Valves

- Integrated manual override can be installed in 3 different positions.
- EPDM or FPM Lever type shutter with SS lever.
- Corrosion resistant: metallic parts isolated from fluids & external environment; all screws protected by PE caps.
- DIN 43650 Electrical connector supplied as standard including LED indicator & rectifier (in case of AC coil).
- Installation & maintenance friendly design: high cycling life time electric solenoid actuator with moving internal components designed to exceed 5 million cycles without maintenance. Slewing round shape coil, IP65 protection class.
- PVC-U unionised body available with 2/2 way (versions S12 & S22). Wide choice of union ends according to different standards.



**Other valves available on request.**



## Enclosures

- Plastic enclosures as junction box for user termination to alarm & signal outputs.
- Plastic enclosure for panel mounted instruments.
- Powder coated steel enclosures for complete panels.



## Back Pressure Valves FIP SV

- Sizes 1/2", 3/4", & 1".
- Range: 0.3 - 4 Bar.



## Static Mixers for Blending Injected Chemicals into Pipes

- Sizes 1", 1 1/2", 2", 2 1/2" & 3".
- Injection port 1/2" thread.



## Mixers/Stirrers, Motor Driven

- Fast & Slow.
- Single phase & 3 phase.
- SS & PVC.



## PE Tanks with Large (150)mm Cap for Easy Filling/Access

- 3 sizes: 125, 225, 256, 330 litres.
- suitable to accept stirrers/mixers.
- suitable to accept level switches & ports for suction/ bleed tubing.
- suitable to accept HC200 mounted on top.



### Plastic Tees

- Size: D20 to D50 (0.5" to 1.5")
- Materials used: UPVC, CPVC, PP, PVDF.



### CPVC Clamp Saddles

- Size: D63 to D225 (2" to 8")
- Insert materials: CPVC, PVDF.



### PP Clamp Saddles

- Size: D250 to D315 (10" to 12")
- Insert material: CPVC.



### UPVC Wafer Fittings

- Size: D280 & D315 (10" & 12")
- Insert material: CPVC.



### GR-PP Wafer Fittings

- Size: D280 & D315 (10" & 12")
- Insert material: CPVC.



### Plastic Weld-on Adaptors

- Size: D63 to D315
- Materials: UPVC, CPVC, PP, PE.



### 316L SS Tees

- Size: D25 to D40
- BSP Female Threaded.



### Metal Strap-on Saddles

- Size: DN80 to DN450
- Insert material: UPVC.
- Special order for other sizes
- For Wet Tap Installation Special order for bigger sizes.



### 316L SS Weld-on Adaptors

- Size: D50 to D600 (1.5" to 24")